

71ST VILLAGE SHOW & CAR BOOT HANLEY SWAN VILLAGE HALL

**August Bank Holiday Weekend
Saturday 24th August 2024**

ENTRIES CLOSE : THURSDAY 22nd AUGUST 2024 5.00pm
Enter Online at: <https://www.hanleyparish.org/village-show>

CLASSES IN :

- FLOWERS •
- VEGETABLES & FRUIT •
 - FLORAL ART •
 - HANDICRAFT •
- HOME COOKERY & PRESERVES •
 - PHOTOGRAPHY •
 - HOMEMADE DRINKS •
 - CHILDRENS SECTION •



HANLEY SWAN VILLAGE HALL, WELLAND ROAD WR8 0EQ
www.hanleyparish.org/village-show

SECTION 1 FLOWERS Sponsored by Grange Farm Nursery



Cut flowers to be displayed in a single container.

1. Annuals, 3 stems, with foliage
2. Vase of 6 flower stems of 1 shade
3. Container of mixed perennial flowers
4. Cactus Dahlias, 3 blooms
5. Large Ball/Decorative Dahlia, 3 blooms
6. Fuchsias– 5 individual Fuchsia flower blooms, mixed kinds allowed
7. One Rose Stem or Spray
8. Outdoor pot containing 1 or more plants
9. Miniature garden in a seed tray
10. 5 ornamental grass stems in a vase (can be more than one variety)
11. Hydrangea, 1 stem
12. Flowering Pot Plant
13. Indoor Pot Plant
14. Cacti / Succulent (s)

TIPS FOR SUCCESS

- Condition and uniformity are the important criteria. An exhibit is in good ‘condition’ when it is at its most attractive stage, fresh and free from damage due to weather, pests, disease or any other cause.
- An exhibit is ‘uniform’ when the items match in age, size and form.
- Do not include foliage unless the schedule asks for this.
- If more than one bloom is asked for, priority will be given to flowers matching in colour, size and form.
- If the exhibit is in a container, check if any dimensions are specified



SECTION 2: VEGETABLES & FRUIT

Sponsored by Nuyard Country & Garden Centre

Class 15. Collection of Fruit &/or Vegetables Exhibitor’s Choice, is being sponsored by Hanley Parish Council and the first prize is £25! This offer is designed to encourage people have a go and grow their own. So have a go and enter your fruit and vegetables, Good Luck!

Class 41. Vegetable Sculpture, is being sponsored by The Hanleys Village Show and the first prize is £25! Please see the website www.hanleyparish.org/village-show and the Facebook page for ideas.

SECTION 2: VEGETABLES & FRUIT continued...



- 15. Collection of Fruit &/or Vegetables Exhibitor's Choice** (60cm x 60cm tray is provided)
- 16. Onions**, 4 up to 8ozs (227g)
- 17. Onions, green salad/spring**– 3, with foliage and roots attached
- 18. Shallots**, 6 matching, any shape
- 19. Leeks**, 2
- 20. Carrots**, 3 (trimmed tops)
- 21. Beetroot** 3 (trimmed tops)
- 22. Tomatoes**, 6
- 23. Tomatoes**, Cherry type, 1 truss (not all fruits need be ripe)
- 24. Any other greenhouse veg**, 1
- 25. French Beans**, 3
- 26. Runner Beans**, 3
- 27. Radishes, small salad** –3, with foliage trimmed to approx. 30mm
- 28. Potatoes**, 4 coloured
- 29. Potatoes**, 4 white
- 30. Courgettes**, 3 (10cm – 15cm length)
- 31. Collection of any 3 Squashes**
- 32. Marrow**, heaviest
- 33. Collection of any 3 Vegetables**
- 34. Fresh Garden Herbs**, collection in a container up to 30cm diameter
- 35. Rhubarb** - 3 stalks, tops of foliage cut to approx. 75mm from start of leaf stalks
- 36. Dessert Apples**, 5 fruits
- 37. Cooking Apples**, 5 fruits
- 38. Plate of fruit**
- 39. Collection of 3 fruits**
- 40. A container of salad vegetables** (min 3 varieties)
- 41. Vegetable Sculpture**– see guidance on Parish website

TIPS FOR SUCCESS The main criteria are condition; size; colour and uniformity. Points are awarded for each of these attributes but generally condition counts more than size. All specimens should be alike in size, form and colour. In classes for the heaviest/longest vegetable, size is most important.

FRUIT: Judges are looking for ripe, but not overripe fruit with an attractive, naturally produced colour. If possible, fruits should be above average size for the cultivar, but enormous specimens are not necessary or desirable. Raspberries, strawberries and gooseberries should be shown with stalks attached.

VEGETABLES: Judges are looking for cleanliness, freshness, tenderness with no coarseness or blemishes. Large vegetables are best but only if accompanied by quality, as the production of large specimens requires more skill.

- In the case of potatoes shape and eyes are also taken into account.
- Root vegetables must be free of soil (but cleaning or washing should not damage the skin) tops cut off, except beetroot. Leaf stalks should be neatly tied.
- With ripe onions and shallots only completely dead skin and leaf should be removed and the end of the neck tied neatly. With still-growing onions (as for winter and spring sown varieties but not salad onions) remove about one third of the length of the leaves.
- Peas and beans should be cut off the vine with scissors leaving some stalk attached.

This Year's Show 2024

Well, we hope that by August, we won't be needing canoes and paddles to get around our villages, with the amount of rain we have had this year. Hopefully this will help with our growing for the show, although local farmers have a different view!

Taking on board advice from the judges, we are limiting the number of entries you can make into any class to two. You can enter as many classes as you wish, but we will accept only two entries for a class from you.

We do not charge people to visit the show, but as a "not for profit" organisation, we aim to cover our costs for staging the show each year. Therefore, donation buckets are available around the hall if you wish to offer us support.

Website & How to Enter Online

We have merged our site to that of the Hanley Castle Parish site, and we have our own section <https://www.hanleyparish.org/village-show> The website tells you about the show and gives hints and tips on making the most of your entries. You may also download a copy of this schedule and entry form and email your entry directly to us at hanleyshow@gmail.com, and then you pay your entry fee when you bring in your exhibits. Also you can enter on line using the online form.

Sponsors

This year, we are thrilled to have some local sponsors some of the sections. They have generously donated the prize money for the show. We also appreciate donations given to us from local businesses towards raffle prizes, and refreshments for the Single Reeds.

If you would like to sponsor the show next year, please contact us at hanleyshow@gmail.com.

The Car Boot

The cost is **£10 a boot**. Access to the field on Saturday for Car Boots is from **12:00 onwards**, but please remember the show itself opens at 13:30. Please take guidance from stewards as to where to exhibit. Car booters should not leave the field until 16:00 for the health and safety of those still on the field.

The Market Place

Weather permitting, we shall have chairs and tables for refreshments and be entertained on the car park space by Single Reeds. We hope to welcome some of the stall holders from the Café Market.

Teas and Cakes

Wonderful refreshments of home-made cakes and bacon butties will be available from 13:00 onwards courtesy of the kind volunteers from Hanley Castle WI.

Can you help?

The committee are always extremely grateful for any help you can offer in running the show, helping in the hall, selling raffle tickets, or assisting in the administration. Please contact any of the committee if you can help, even for an hour or so on Friday morning when we set the hall up, or on Saturday. All support is gratefully received.

IMPORTANT TIMINGS FOR ENTRIES

DEADLINE FOR ENTRY FORMS:

5PM THURSDAY 22nd AUGUST 2024

Entries can be passed to any of the committee members
or handed in to:

Grange Farm Nursery, Guarlford Road, Guarlford

A Box left at Reception of Albion Lodge, Roberts End, Hanley Swan.

STAGING OF EXHIBITS

Friday 23rd August 2024

Exhibits may be brought to Hanley Swan Village Hall for staging the afternoon before the show between 15.00 – 17.00, if you wish to miss the Saturday morning rush.

Saturday 24th August 2024

- Doors open at 08.30 and all entries must be staged by 10.30 on the morning of the show. They then cannot be removed until the conclusion of the prize giving at 16.00.
- At 10.30 the Hall will be closed to the public for judging.
- The Hall will open again to the public at 13.30.
- Exhibitors **MUST** remove their entries by 17.00. The committee cannot take responsibility for uncollected items.
- Prize money may be collected from the back of the hall from 15.00 onwards.

Please get in touch with any of the Committee Members below if you have any questions.

Village Show Committee

Hilary Fowler – The Paddocks, Picken End, Hanley Swan WR8 ODQ (01684 311085)

Carol Nicholls – Holly Cottage, Gilberts End, Hanley Castle WR8 OAS (01684 310337)

Jim Hill – (07519 123822)

Ann Canham - Smithy Cottage, Gilberts End, Hanley Castle WR8 OAS (01684 310366)

Nicky Carless— Magstones, Westmere, Hanley Swan WR8 ODG.

Sarah Darwent – Greenways, Roberts End, Hanley Swan, WR8 ODL, (01684 310309)

Jane Jordan – 4, Brinkley Drive, Hanley Castle (07879 606714)



HANLEYS VILLAGE SHOW

ENTRY FORM

www.hanleyparish.org/village-show

Exhibitor Number (office use only):



IN BLOCK CAPITALS, PLEASE. ONE PARTICIPANT PER FORM	
<i>If more entries required, please photocopy this or download from website.</i>	
Name:	
Address:	Post Code:
Tel:	Email: *
If junior, please give age:	

Please clearly circle the class numbers you wish to enter and give sizes of larger items below.
 If you wish to enter a class twice, write "x2" next to the class number.
 No more than 2 entries will be accepted per class.

1	2	3	4	5	6	7	8	9	10	11	12	13
14	15	16	17	18	19	20	21	22	23	24	25	26
27	28	29	30	31	32	33	34	35	36	37	38	39
40	41	42	43	44	45	46	47	48	48	48	49	50
51	52	53	54	55	56	57	58	59	60	61	62	63
64	65	66	67	68	69	70	71	72	73	74	75	76
77	78	79	80	81	82	83	84	85	86	87	88	89
90	91	92	93	94	95	96	97	98	99			

Fee: 50p for adults, 20p for children per Entry. Fee total : _____ Paid? Y/N

<i>Completed forms by 5pm on 22nd August 2024 to: Grange Farm Nursery, Guarlford and Albion Lodge, Roberts End, or any committee members.</i>	
Email to hanleyshow@gmail.com	SORRY, WE CANNOT ACCEPT LATE ENTRIES

I have read and understand the important notes below:

Signed:..... Parent/Guardian? YES/NO

IMPORTANT, PLEASE NOTE:

If you win a prize do you consent to you/your child being photographed & the image put up on the show website? YES/NO

If YES do you want the name published with the photo? YES/NO

TICK HERE IF YOU WOULD LIKE TO RECEIVE OCCASIONAL EMAIL NEWS OF THE SHOW.

Our Privacy Policy is available on our website. You can opt out at any time by emailing us.

NOTE: ENTRY IS SUBJECT TO THE RULES AVAILABLE ON OUR WEBSITE OR ON THE PRINTED SHOW SCHEDULE.

SECTION 3: FLORAL ART Sponsored by Albion Meadows



Exhibits can be Modern or Traditional. Classes 42 to 46 and 48 must not be larger than 60cm x 60cm base, height unrestricted. You can arrange your flowers at home, and stage them at the Hall. In keeping with the RHS and NAFAS guidelines, we are discouraging the use of floral foam in exhibits, and ask that entrants find alternative mechanics for displaying their designs.

- 42. An arrangement of flowers and foliage from your garden.**
- 43. 'Olympics'** An exhibit using fresh plant material, with or without accessories.
- 44. An arrangement just using foliage,** using fresh plant material.
- 45. An arrangement** using fresh, dried or artificial plant materials and accessories.
- 46. An arrangement in a teapot** using fresh plant material.
- 47. A small exhibit of flowers not exceeding 12cm in diameter,** using fresh plant material, with or without accessories.
- 48. A corsage/buttonhole,** fresh plant material, with/without accessories (e.g. ribbon).

TIPS FOR SUCCESS Judging of these categories is as much about the artistic interpretation of the title, as well as the skill. Good quality flower and plant material is important.

SECTION 4: HANDICRAFTS - Sponsored by AJB Joinery



Handicrafts must NOT have been entered in this show before & be your own work.

- 49. A quilted or patchwork item**
- 50. Embroidery**
- 51. Cross stitch**
- 52. Tapestry**
- 53. Any Knitted or Crochet Item**
- 54. A Painting or Drawing**
- 55. A Handmade Toy of any material**
- 56. Any Item using Wood**
- 57. Any item made from felt**
- 58. A Greetings Card**
- 59. Any other Handcrafted item**

TIPS FOR SUCCESS Please fold large exhibits so that they can be easily examined.

SECTION 5: HOME COOKERY & PRESERVES

- Sponsored by Hanley Swan Village Post Office and Shop

60. Victoria Sponge– NO CREAM Please
(follow recipe below)

61. Maderia Cake (please supply a copy of
your recipe)

62. Quiche Lorraine

63. A plate of tray bake slices, your choice

64. Almond Macaroons

65. Bara Brith



66. Any brown bread (not using a
bread maker).

67. A jar of jelly

68. A jar of jam

69. A jar of marmalade

70. A jar of chutney (labelled
spicy, hot, or mild)

71. A jar of honey

72. A jar of lemon curd

73. A plate of 6 Eggs

TIPS FOR SUCCESS The Judges will be looking for a well-presented entry, properly cooked, of the correct taste and texture and as described in the schedule, i.e. size, recipe, etc.

- All food items should be covered or wrapped and presented on a plate, bread-board, dish or other suitable display item and not placed direct onto the table.
- Preserves should be labelled with the name of contents and full date of making. Jars must be **sealed**; chutney should be in a twist top jar, lemon curd with a cellophane cover and waxed disc. If a twist top or plastic covers are used for jams a waxed disc is not required. All should have a good seal and lids should be new.
- Bread should be cooked at least 24 hours before showing (for ease of cutting for judging).

Victoria Sponge (Class 60) NO CREAM Please

Ingredients

175g self-raising flour

1 tsp baking powder

175g butter , softened, plus extra for
greasing

175g golden caster sugar

3 eggs

Icing sugar, for dusting.

Filling

3 tbsp raspberry jam

See next page for method

Victoria Sponge (Class 60) Continued...

Method

Preheat the oven to 180oC /350 oF/ Gas Mark 4. Grease and line the bases of two 20cm/8inch sandwich tins.

Sift the flour and baking powder into a bowl and add the butter, sugar and eggs. Mix together, then beat well until smooth.

Divide the mixture evenly between the prepared tins and smooth the surfaces. Bake in the preheated oven for 25-30 minutes., or until well risen and golden brown, and the cakes feel springy when lightly pressed.

Leave to cool in the tins for 5 minutes, then turn out and peel off the lining paper. Transfer to wire racks to cool completely.

Sandwich the cakes with the raspberry jam. Dust with icing sugar and serve.



SECTION 6: PHOTOGRAPHY

All entries as standard or mounted prints taken by the exhibitor not larger than 20cm x 15cm. Digital photographs are acceptable. The themes for this year's photographs are:

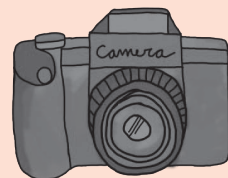
74. Water

75. Patterns

76. Wildlife

77. Our pond visitors

78. A sporting moment



SECTION 7: HOMEMADE DRINKS

79. A bottle of wine, labelled with type

80. A bottle of Flavoured Gin or Vodka, labelled with type

81. A bottle of non-alcoholic beverage –e.g. juice, cordial, lemonade, labelled with type.

SECTION 8: CHILDREN'S SECTION



82. A Floral Arrangement, up to 16 years

Miniature Garden, made with Plant Material in a Seed Tray

83. - up to and including 8 years

84. - 9 to 16 years

85. Animal made from Fruit & Veg.

Exhibit to be named, up to 16 years

Handicrafts

Any hand crafted item

86. - up to and including 8 years

87. - 9 to 16 years

88. A model made from recycled materials

Up to 16 years old

Design and Make a "Bug Hotel"

Max size 40cm x 40cm

89 - up to and including 8 years

90. - 9 to 16 years

91. 'Oh what a picture'

A photograph you have taken, up to 16 years

Children's Art

Please do not put the name on the front of the pictures to allow for independent judging.

92. - Under 5

93. - 5 to 7 years

94. - 8 to 10 years

95. - 11 to 16 years

Celebration Cup Cakes x 6

Home made and decorated

96. - up to and including 8 years

97. - 9 to 16 years

A Gingerbread Character

Homemade and decorated

98. - up to and including 8 years

99. - up to 16 years

TROPHIES

The Connie Wilson Challenge Bowl – for the highest number of points in Section 1.

The Peggy Wilson Challenge Bowl – for the highest number of points in Section 2.

The Gilbert’s End Trophy - for the highest number of points gained in Section 1 and Section 2.

The Gilbert Lea Cup – for the best collection of fruit and vegetables (Class 15).

The Owen Evans Trophy - awarded for “The best vegetable exhibit in the Show” (not including Class 15)

The George Sharpe Salver – for the best floral art in Classes 42-45.

The Mr P Clutterbuck Cup – for the best exhibit in a “Teapot” (Class 46).

The Mr P Clutterbuck Cup – for the best small exhibit of flowers. (Class 47).

The Miniature Cup – for the best Miniature garden (children’s Classes 83 or 84).

The Mr P Clutterbuck Cup – for the best Floral Arrangement by school children (Class 82).

The Alfred & Constance Wilks Memorial Cup – for the best Adult’s Handicrafts (Section 4).

The “Parish Link” Dendy Cup – for the most outstanding Children’s Handicrafts (Classes 86 & 87).

The Oakmere Cup (Mr E G Harlock) – highest number of points gained in the Cookery and Preserves Section (except Class 73- eggs)

The WI Salver “Best Cook” – for the best exhibit from Classes 60 – 66

The Miss Wilson Cup – for the best cake (Class 60).

The Doug & Barbara Chadd Memorial Plate – for the best pastry (Class 62)

The Mr C Adeney Bowl - Best Preserve

The Mrs A Sturt Cup – for the best Celebration Cup Cakes by children (Class 96 or 97).

The Thompson Cup – for the best Photograph in Section 6.

The Stainforth Cup - most points in Photography, Section 6

The Mr P Hedges Cup – for the most outstanding Children’s Picture (Classes 92-95)

A Rose Bowl (The Bert Appleby Trophy) - “Best in Show” – Adult Classes

Cafe Market Bowl - “Best in Show” from all Children’s Classes

These cups cannot be won outright.

Please ensure that they are cleaned and returned to one of the committee members the week before next year’s show. If they are damaged please let us know in time for us to repair for the next recipient, *thank you*.

RULES

Entries are open to all.

1. Exhibits must be staged by 10:30 at which time the Hall will be closed for judging. Late entries cannot be accepted (doors open for exhibitors at 8:30).
2. The trophies will be presented at 16.00 and all exhibits must be removed AFTER the trophy presentation.
3. **Exhibits must be the property of, and personally cultivated by the exhibitor**, except in classes 42 to 48 in section 3, and class 82 in Section 8.
4. The first prize in any class may be withheld if there are no more than 3 entries, or at the Judge's discretion.
5. An Exhibitor can only submit a maximum of **two entries per class**. There is no limit on the number classes an exhibitor can enter (class permitting).
6. Entry fees for all classes will be 50p except for all children's classes (Section Section 8) which are 20p.
7. Prizes for all sections will be.....1st - £2 2nd - £1 3rd - 50p
8. Prizes for class 15 & 41 will be.....1st - £25 2nd - £3 3rd - £2
9. In addition, £10 will be awarded in each Section (1-6) to the person with most points in that section.
10. Points for trophies will be awarded as follows: -
1st – 3pts 2nd – 2pts 3rd – 1pt
10. The Judges' decisions will be final.



Finally, Please Remember to

- Follow the instructions for the class in the schedule; failure to do so may exclude your exhibit from being judged.
- Not putting your name on any exhibit that is visible to the judges.
- Allow time to set up your entry to its best advantage on the day, we have to clear the hall of all exhibitors for judging by 10:30.
- Collect your prize money from the back of the hall from about 15.00 onwards.